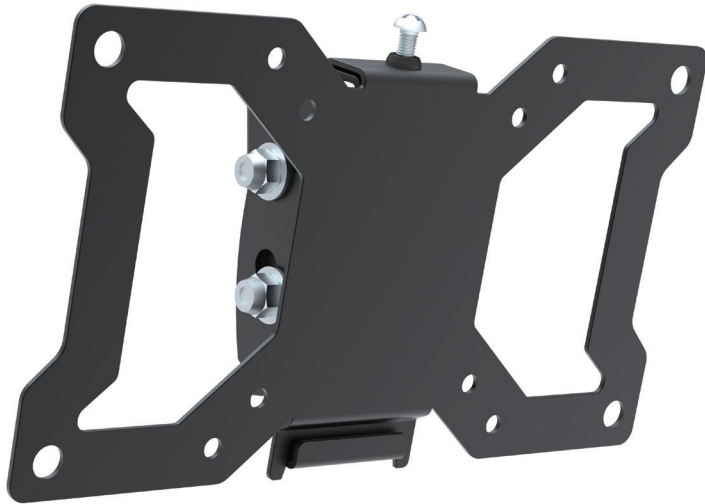


LD SERIES

Classic HD Tilting Curved & Flat Panel Wall



LD1332-T

PRODUCT FEATURES:

- Supports flat panel displays 13" to 32"
- Supports up to 44 lbs
- No tool assembly for fast installation
- Preset-hole design allows easy installation
- Strength has been tested for a minimum of three times its stated load capacity
- Tilts up 10° or down 15° without the use of tools

- Product Dimensions:
36mm x 220mm x 120mm
- Supported VESA Patterns:
75 x 75 • 100 x 100 • 200 x 100
- Made of Steel

Specifications

